



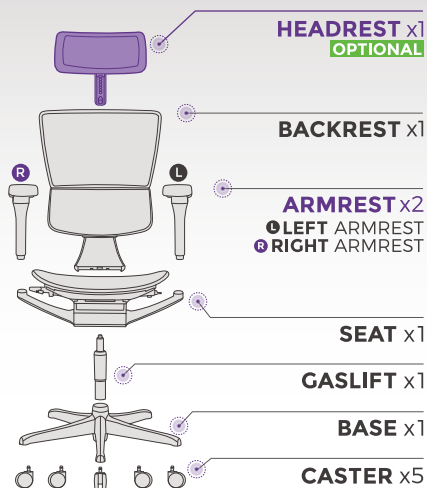
ioo ELITE 2

USER GUIDE



DISCOVER OPERATION
GUIDE VIDEO

CHAIR PARTS TOOLS



ALLEN
WRENCH



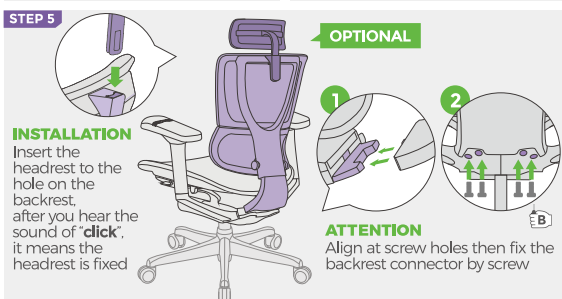
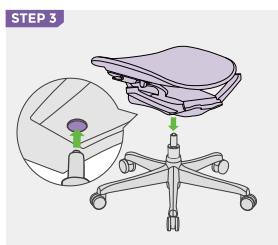
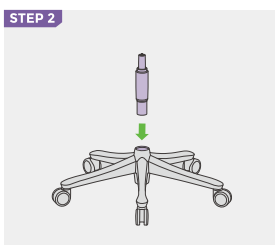
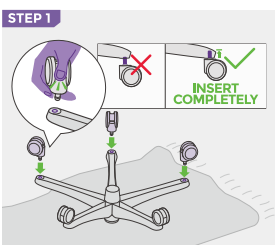
A FOR
ARMREST

(SPARE)
1/4 x 19/32"

B FOR
BACKREST

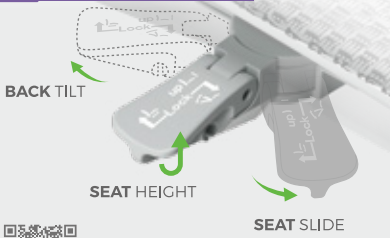
(SPARE)
M8x15mm

ASSEMBLY STEPS



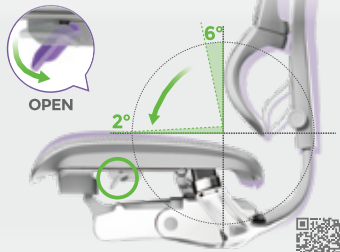
CONTROL

SINGLE LEVER CONTROL ▶



DISCOVER OPERATION GUIDE VIDEO

◀ FORWARD TILT ADJUSTMENT



DISCOVER OPERATION GUIDE VIDEO

BACK & LUMBAR

BACK HEIGHT ADJUSTMENT ▶



DISCOVER OPERATION GUIDE VIDEO

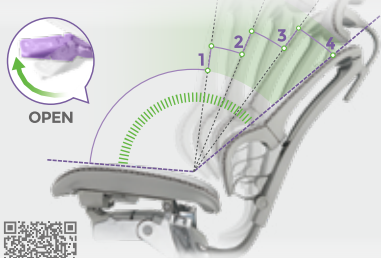
◀ 6D ADJUSTABLE LUMBAR PILLOW



DISCOVER OPERATION GUIDE VIDEO

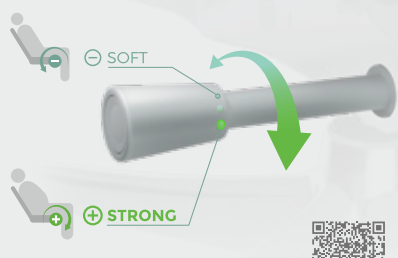
RECLINE

RECLINE POSITION LOCKING ▶



DISCOVER OPERATION GUIDE VIDEO

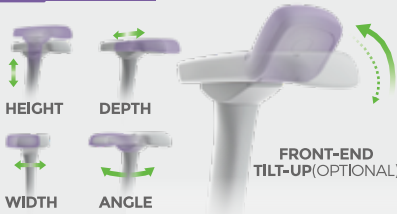
◀ BACK TILT TENSION



DISCOVER OPERATION GUIDE VIDEO

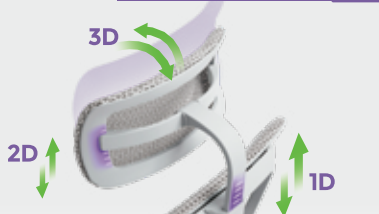
ARMREST & HEADREST

5D* ARMREST ▶



DISCOVER OPERATION GUIDE VIDEO

◀ 3D HEADREST (OPTIONAL)



DISCOVER OPERATION GUIDE VIDEO

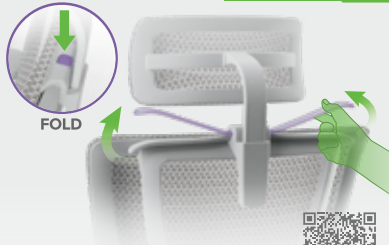
ADDITIONAL OPTIONS

LEGPRO LEG REST ▶



DISCOVER OPERATION GUIDE VIDEO

◀ COAT HANGER



DISCOVER OPERATION GUIDE VIDEO

iOO ELITE2

USER GUIDE